

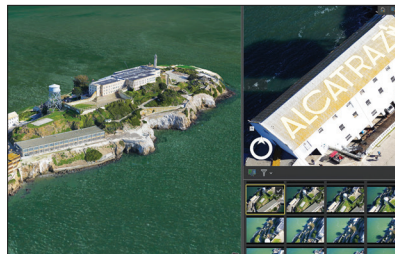
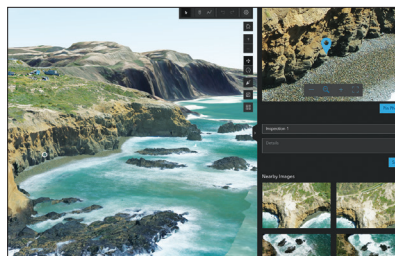
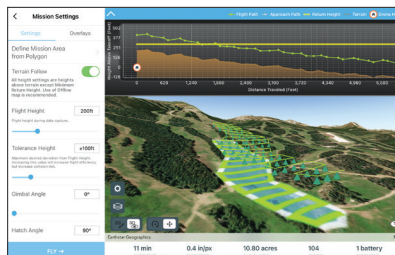
Drone Mapping in ArcGIS®

Maximize drone operations with a comprehensive geospatial platform

Esri offers several drone mapping software solutions for creating or elevating your drone program. Based on the priorities and photogrammetry needs of your organization, find the right ArcGIS® solution to perform drone mapping with your data.

Esri® Drone Mapping Products

- **ArcGIS Flight** is a mobile app that improves drone flight planning and performance for mapping and inspection. It offers tailored flight modes, regulatory compliance, and seamless geospatial content import for high-quality imagery.
- **Site Scan for ArcGIS** is a cloud-based drone mapping software that streamlines imagery processing and sharing, enabling secure, scalable, and rapid 2D and 3D imagery analysis within your organization.
- **ArcGIS Drone2Map®** is a desktop app for GIS drone mapping, offering 2D and 3D photogrammetry outputs that can be easily shared within your ArcGIS organization.
- **ArcGIS Reality for ArcGIS Pro** integrates reality mapping into GIS workflows, allowing users to process drone, aerial, and satellite imagery to create photorealistic 3D digital representations of sites, cities, and countries.



Unlock drone mapping potential with GIS:

- Connect drone imagery and crucial location data in ArcGIS, the world's leading GIS technology.
- Visualize and gain deeper insights into the world around you with high-quality drone imagery that provides a clear and detailed perspective.
- Unify all elements of an end-to-end workflow—including data capture, management, analysis, mapping, and sharing—in a system built for growth.
- Strengthen decision-making at every level of your organization by incorporating drone imagery into workflows and business systems.

Compare Our Drone Mapping Products

		ArcGIS Drone2Map	Site Scan for ArcGIS	ArcGIS Reality for ArcGIS Pro
Project Area	Building, site, or town	✕	✕	✕
Processing Environment	Desktop processing	✕		✕
	Cloud processing (SaaS)		✕	
Processing Outputs	True ortho	✕	✕	✕
	Dynamic ortho	✕		✕
	3D outputs (3D mesh, point cloud)	✕	✕	✕
	Digital surface model (DSM)	✕	✕	✕
	Digital terrain model (DTM)	✕	✕	
	360-degree panorama		✕	
Integration with ArcGIS Flight	Process imagery collected with ArcGIS Flight	✕	✕	✕

FOR MORE INFORMATION

Visit go.esri.com/dronemapping to get more information, connect with the sales team, and ask questions.

